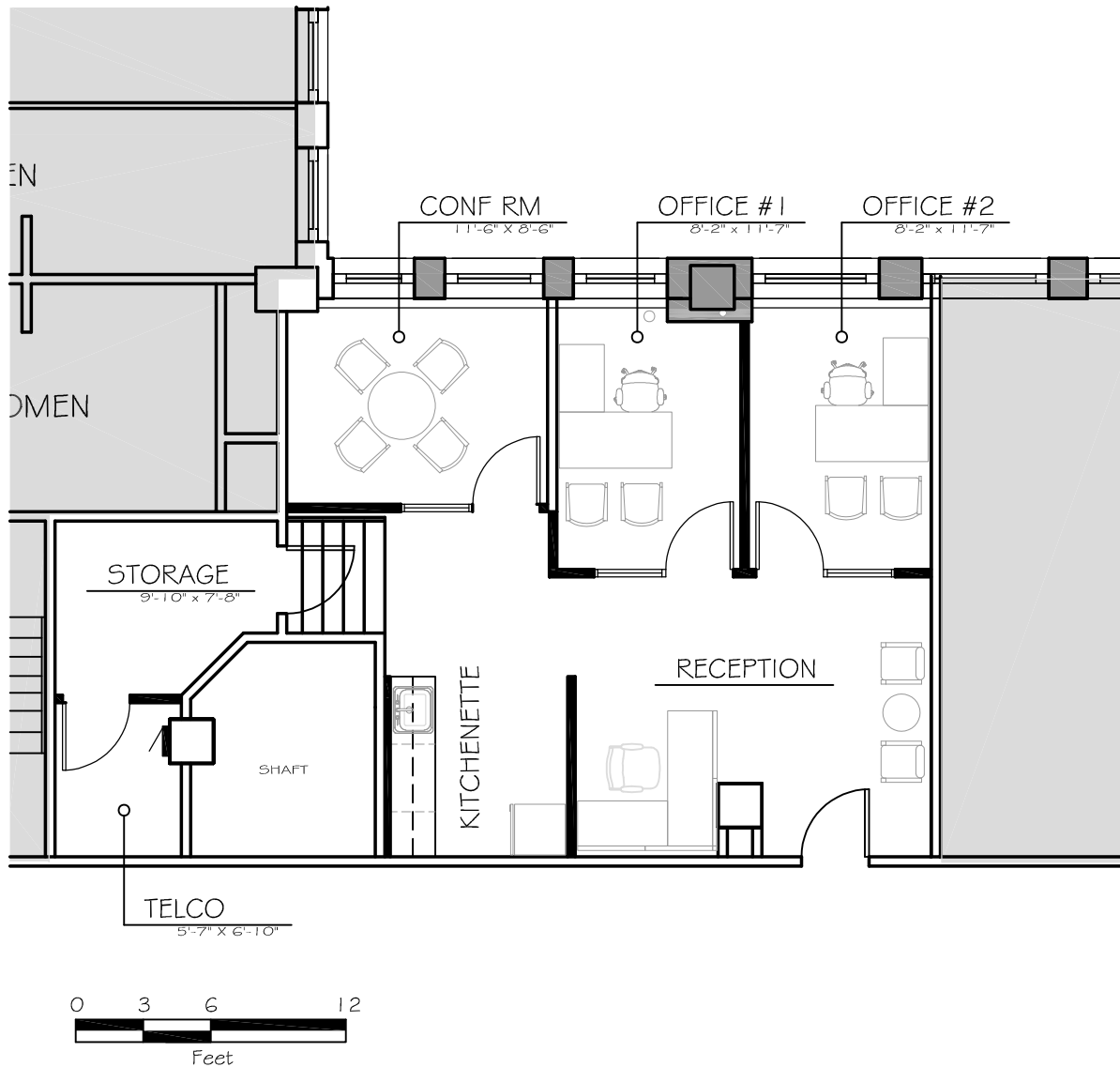


# Conceptual Plan



DRAWING

A

Proposed new offices for:  
SPEC SUITE 1850

Address:

18TH FLOOR

*Third party users of these drawings and specifications shall verify existing conditions before proceeding with any future work and be responsible for the same.*



H/S

HYDZIK SCHADE ASSOCIATES, LTD.  
135 SO. LASALLE STREET, SUITE 3710  
CHICAGO, IL 60603 O. 312.236.9366

INTERIOR ARCHITECTURE + DESIGN

PRO #ONL2110

02/26/21

date  
KKM

drawn